



Ramer Products

Replacement Parts and Assembly Diagrams



1840 Terminal Road

P.O. Box 1027

Niles, Michigan 49120

Phone: 269.684.7710

Fax: 269.684.8894

www.ramerproducts.com

email: ramer@ramerproducts.com

SALES AND DISTRIBUTION

All sales within the United States and Canada are processed directly through the Ramer Products office in Niles, MI. Sales outside North America are directed to agents or distributors in many parts of the world. If you are located outside the United States, please contact us and we will put you in touch with the sales agent for your particular location.

If you are ordering for the first time, or would just like assistance, we would be pleased to help you select the proper fitting for your application. Ramer Products works closely with its customers and agents to be sure that the tool you use is right for your application.

Replacement parts may be ordered in the same way. The enclosed drawings and parts listings will help you in ordering the proper part number and size for your repair job. Please keep in mind that many parts require a size designation following the part number. So, please look for the noted instructions for your particular model. The size selector on the corresponding catalog pages should help in selecting both new tools and replacement parts. However, we are always here to answer any questions you may have.

PLACING ORDERS

Orders may be telephoned, mailed, e-mailed or faxed to the address or phone numbers shown below. Unless specified, all orders will be shipped by UPS ground and all applicable charges will be added to the sales invoice. Routine orders of items that are in stock will normally ship within two to three days from our receipt of your order. If it is critical, we will gladly expedite your order and ship the same day if it is received by 1:00 PM Eastern time. We prefer to use UPS Next Day Air, but other air services may be available on request. The appropriate shipping charges will be added to your invoice, or, in some cases, may be shipped freight collect. Ramer Products does not have a minimum order and we are pleased to ship whatever you need to do your job most efficiently.

TERMS

Shipping terms are FOB Shipping Point (Niles, Michigan) and all goods become the property of the buyer at the time of pickup by the carrier. Payment terms are net 30 days and we would appreciate your payment on or before the due date. We will also accept payment in advance, wire transfers, credit cards and COD terms. If you are doing business with us for the first time, and would like open credit terms, we request that you supply us with three verifiable trade references and one bank reference several days prior to the proposed shipping date.

SAFETY

Because of the inherent risks in high pressure leak testing, Ramer Products recommends, and can provide, safety chains which may be installed to your specifications.

ACCESSORIES

Ramer Products offers a variety of accessories to help in the customization of your test fittings. We offer Hansen and PCU quick connect sockets and plugs for attachment to your fittings. We also stock a variety of 90-degree elbows and male-to-male reducers so we can ship your tools "ready to go." In most cases, we will assemble these parts for a small fee. We also have the capability to Helium leak test your assembled tools to be sure that the threaded connections and the quick connects work properly and are free from leaks. Please consult with us for details

MATERIALS

Ramer Products endeavors to use the most effective materials for the job. Many parts are manufactured from high strength aluminum to achieve lightweight durability. All aluminum parts are hard coat anodized and Teflon treated for corrosion resistance. Collets, tube stops and other steel parts are primarily made from a corrosion resistant aircraft stainless.

MAINTENANCE

Maintenance of RAMSEAL leak test tools is key to the safe and successful operation of your fittings. To assist you, we have prepared a video showing the maintenance of our more popular series tools. This 20-minute video is free of charge to our customers and is available on CD-ROM or our website.

THANKS

Ramer Products is grateful for your business and it is our privilege to serve you. We strive to supply a safe, reliable product that will provide you with years of productive service.

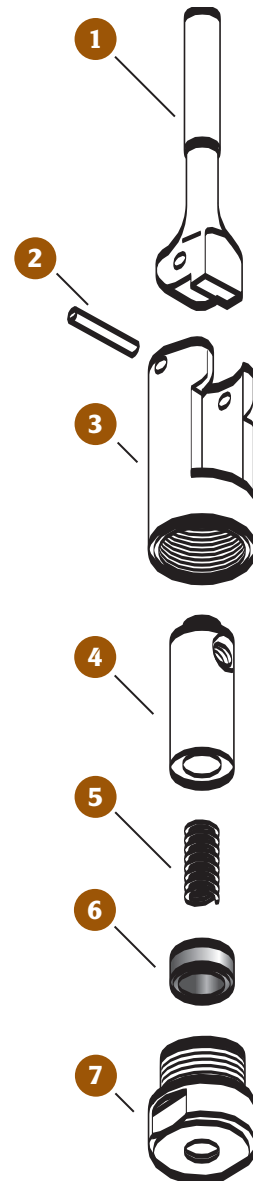


1840 Terminal Road • P.O. Box 1027 • Niles, Michigan 49120
Phone: 269.684.7710 • Fax: 269.684.8894 • www.ramerproducts.com
email: ramer@ramerproducts.com

MODEL 30

30 SERIES

ITEM NO.	MODEL 30 PART NO.	DESCRIPTION
1	3002**	Handle
2	3003	Drive Pin
3	3001	Body
4	3004*	Insert
5	3007*	Spring
6	3008*	Seal
7	3005*	Head

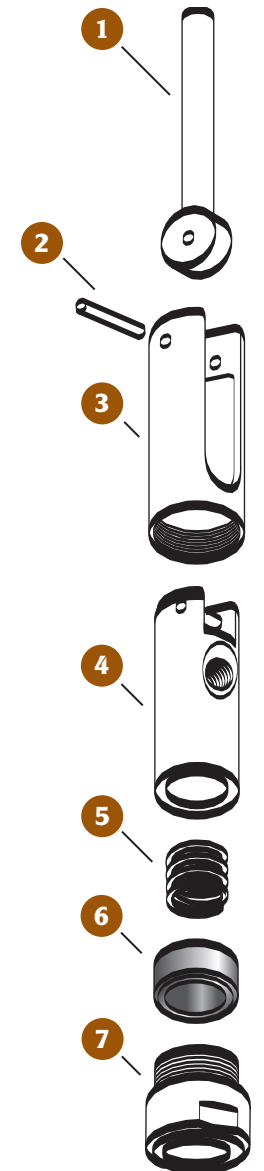


* Specify Model Number, and/or Tube I.D and O.D.
 ** Specify Color

MODEL 31

30 SERIES

ITEM NO.	MODEL 31 PART NO.	DESCRIPTION
1	3102	Handle
2	3103	Drive Pin
3	3101	Body
4	3104	Insert
5	3107*	Spring
6	3108*	Seal
7	3105*	Head

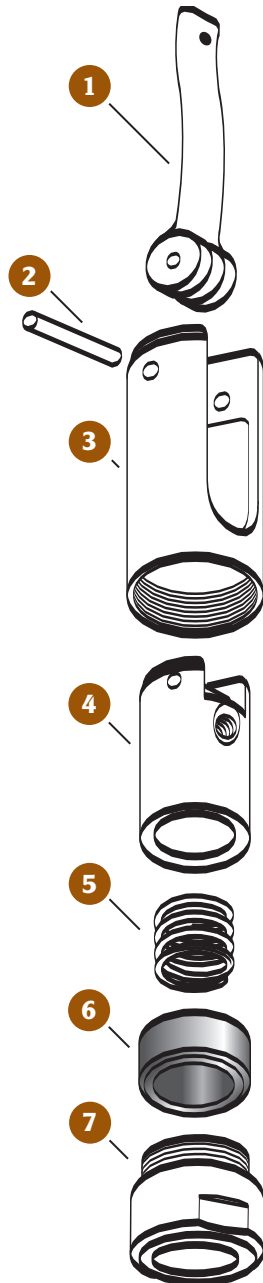


* Specify Model Number, and/or Tube I.D and O.D.

MODEL 32

30 SERIES

ITEM NO.	MODEL 32 PART NO.	DESCRIPTION
1	3202	Handle
2	3203	Drive Pin
3	3201	Body
4	3204	Insert
5	3207	Spring
6	3208*	Seal
7	3205*	Head

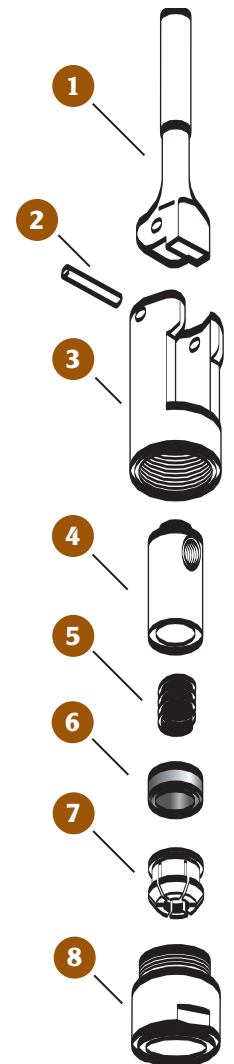


* Specify Model Number, and/or Tube I.D and O.D.

MODEL 40

40 SERIES

ITEM NO.	MODEL 40 PART NO.	DESCRIPTION
1	4002**	Handle
2	4003	Drive Pin
3	4001	Body
4	4004*	Insert
5	4007*	Spring
6	4008*	Seal
7	4006*	Collet w/Pilot
8	4005*	Head

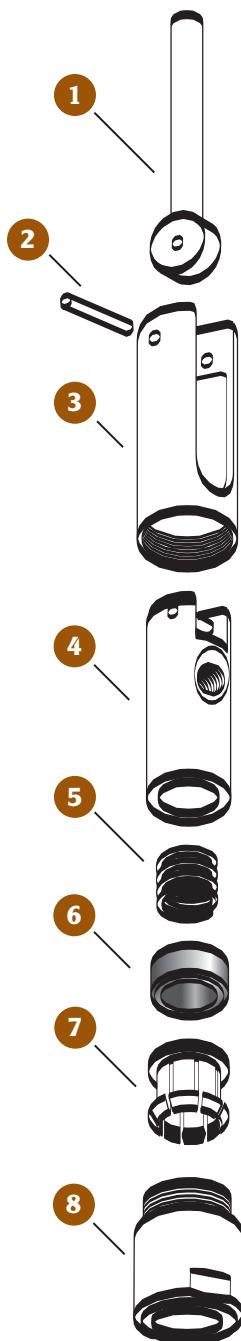


* Specify Model Number, and/or Tube I.D and O.D.
 ** Specify Color

MODEL 41

40 SERIES

ITEM NO.	MODEL 41 PART NO.	DESCRIPTION
1	4102	Handle
2	4103	Drive Pin
3	4101	Body
4	4104	Insert
5	4107	Spring
6	4108*	Seal
7	4106*	Collet w/Pilot
8	4105*	Head

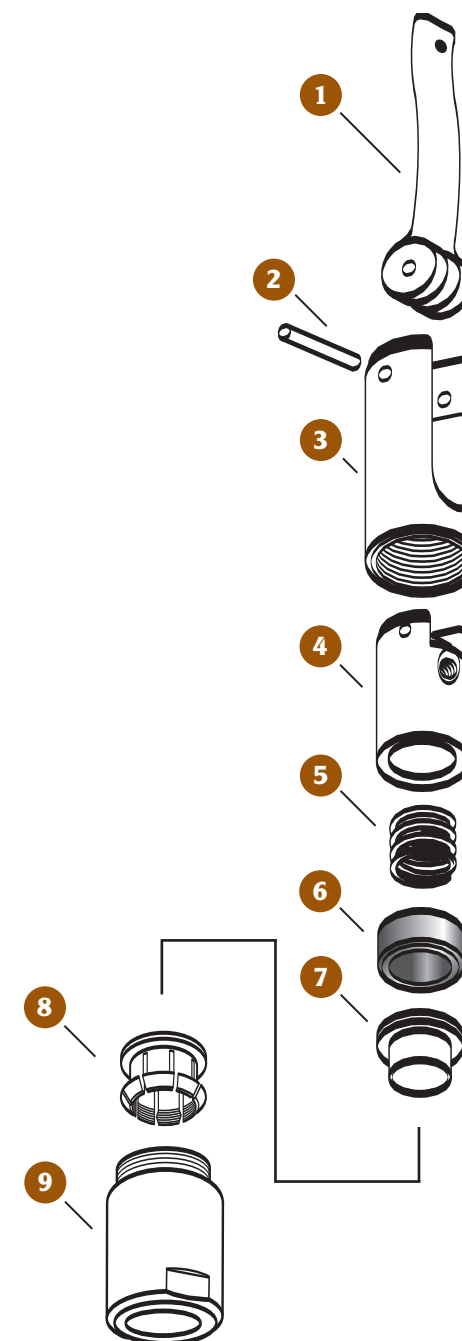


* Specify Model Number, and/or Tube I.D and O.D.

MODEL 42

40 SERIES

ITEM NO.	MODEL 42 PART NO.	DESCRIPTION
1	4202	Handle
2	4203	Drive Pin
3	4201	Body
4	4204	Insert
5	4207	Spring
6	4208*	Seal
7	4211*	Pilot
8	4206*	Collet
9	4205*	Head

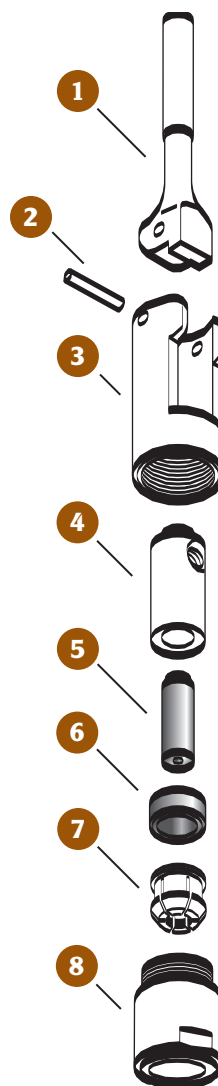


* Specify Model Number, and/or Tube I.D and O.D.

MODEL 50

50 SERIES

ITEM NO.	MODEL 50 PART NO.	DESCRIPTION
1	5002	Handle
2	5003	Drive Pin
3	5001	Body
4	5004	Insert
5	5014	Plug Seal
6	5008	Seal
7	5006*	Collet w/Pilot
8	5005	Head

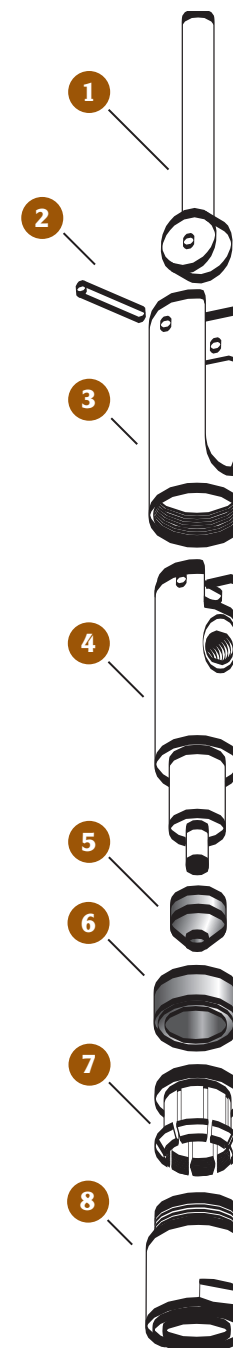


* Specify Model Number, and/or Tube I.D and O.D.

MODEL 51

50 SERIES

ITEM NO.	MODEL 51 PART NO.	DESCRIPTION
1	5102	Handle
2	5103	Drive Pin
3	5001	Body
4	5104	Insert
5	5114	Plug Seal
6	5108	Seal
7	5106*	Collet w/Pilot
8	5105	Head

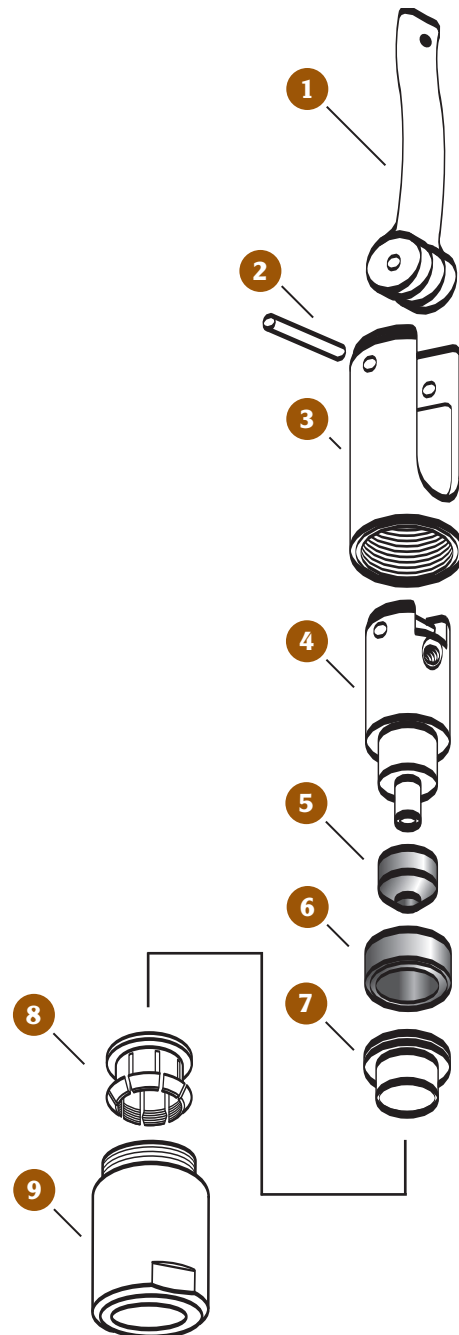


* Specify Model Number, and/or Tube I.D and O.D.

MODEL 52

50 SERIES

ITEM NO.	MODEL 52 PART NO.	DESCRIPTION
1	5202	Handle
2	5203	Drive Pin
3	5201	Body
4	5204	Insert
5	5214	Plug Seal
6	5208	Seal
7	5211	Pilot
8	5206*	Collet
9	5205	Head

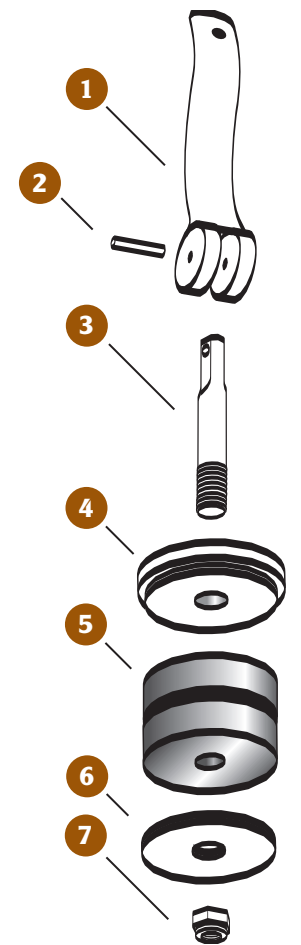


* Specify Model Number, and/or Tube I.D and O.D.

MODEL 70

70 SERIES

ITEM NO.	MODEL 70 PART NO.	DESCRIPTION
1	7002	Handle
2	7003	Drive Pin
3	7001	Shaft
4	7005*	Head Washer
5	7008*	Seal
6	7012*	Bottom Washer
7	7017	Nut

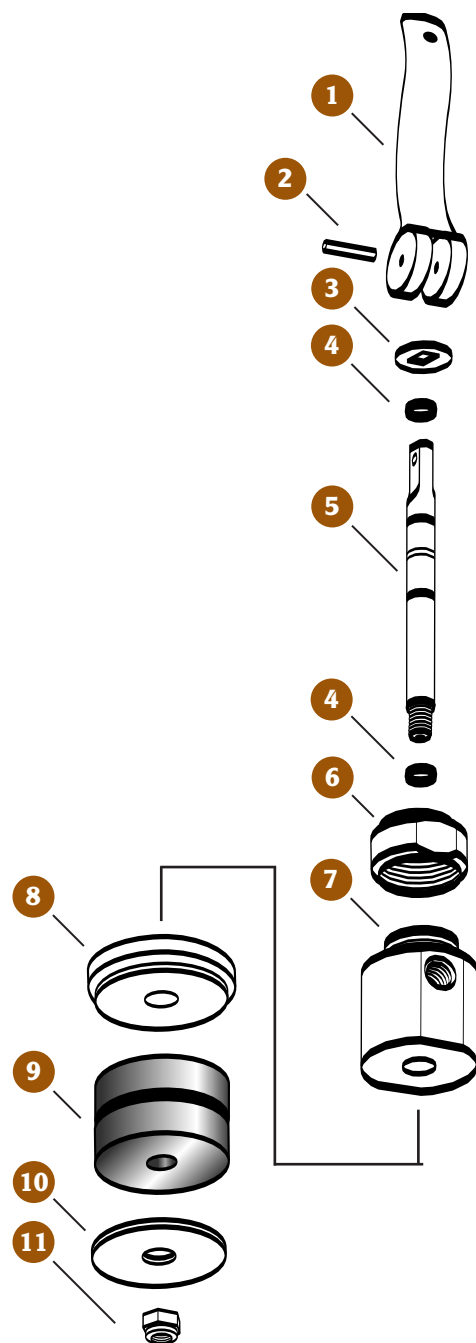


* Specify Model Number, and/or Tube I.D and O.D.

MODEL 77

77 SERIES

ITEM NO.	MODEL 77 PART NO.	DESCRIPTION
1	7702	Handle
2	7703	Drive Pin
3	7712	Wear Washer
4	7724	Quad Seal
5	7728	Shaft
6	7731	Adjusting Nut
7	7701	Body
8	7705*	Headwasher
9	7708*	Seal
10	7712*	Bottom Washer
11	7717	Seal Stop Nut

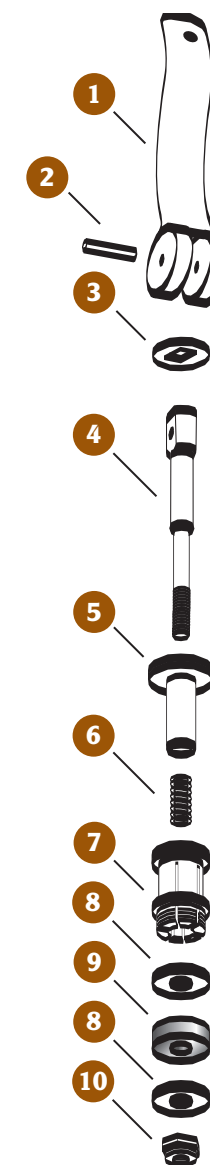


* Specify Model Number, and/or Tube I.D and O.D.

MODEL 80, 81

80 SERIES

ITEM NO.	MODEL 80 PART NO.	MODEL 81 PART NO.	DESCRIPTION
1	8002	8102	Handle
2	8003	8103	Drive Pin
3	NA	8112	Wear Washer
4	8001	8101	Shaft
5	8005*	8105*	Head
6	8007*	8107*	Spring
7	8006*	8106*	Collet
8	8015*	8115*	Seal Stop
9	8008*	8108*	Seal
10	8017	8117	Seal Stop Nut

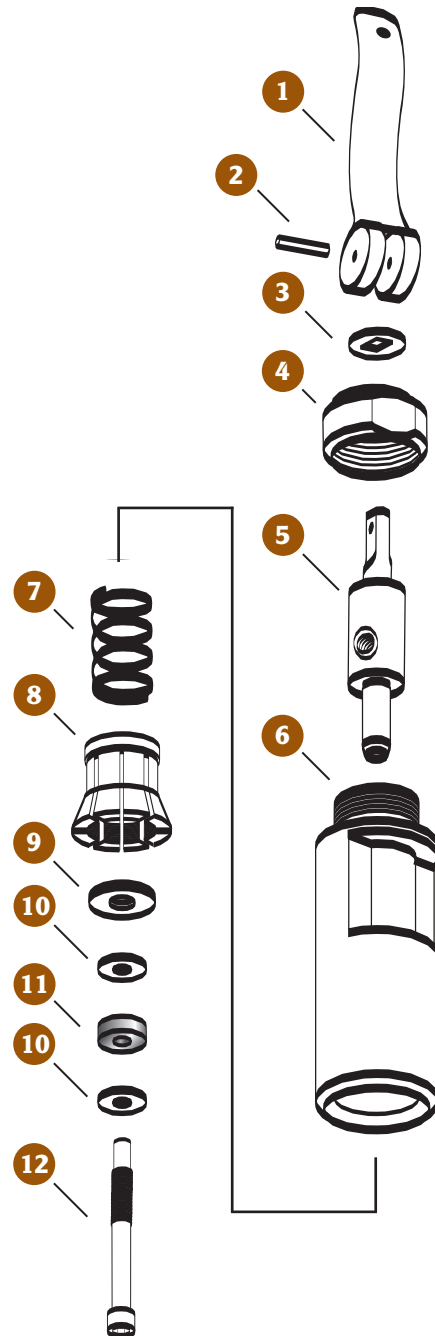


* Specify Model Number, and/or Tube I.D and O.D.

MODEL 121, 122

1 2 SERIES

ITEM NO.	MODEL 121 PART NO.	MODEL 122 PART NO.	DESCRIPTION
1	12102	12202	Handle
2	12103	12203	Drive Pin
3	12112	12212	Wear Washer
4	12131	12231	Adjusting Nut
5	12128	12228	Shaft
6	12101	12201	Body
7	12107	12207	Spring
8	12106*	12206*	Collet
9	12115*	12215*	Tube Stop
10	12115*	12215*	Seal Stops
11	12108*	12208*	Seal
12	12117	12217	Seal Screw

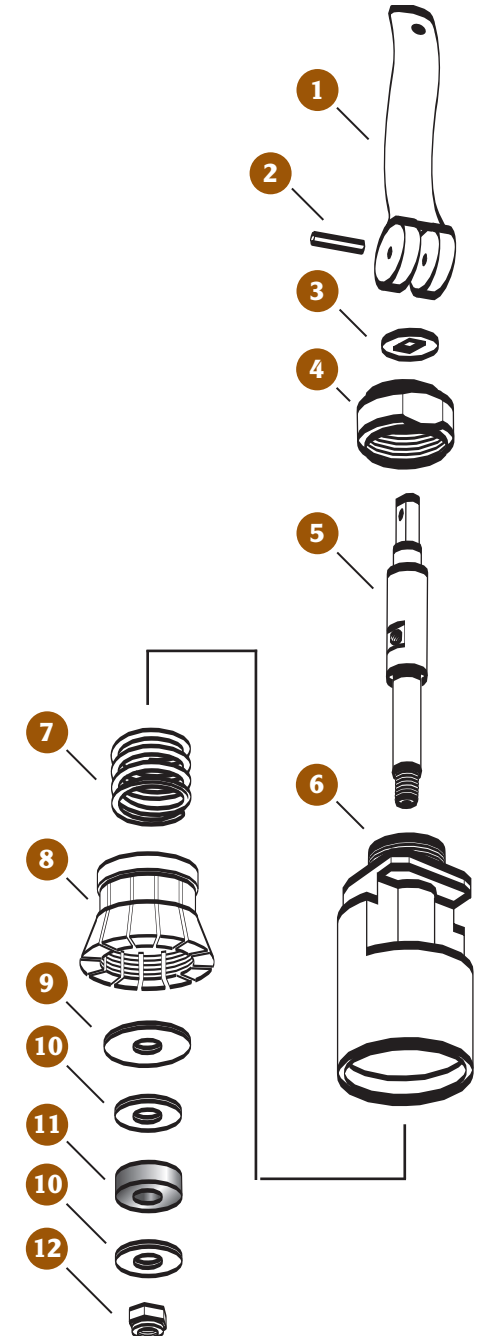


* Specify Model Number, and/or Tube I.D and O.D.

MODEL 123, 124, 125

1 2 SERIES

ITEM NO.	MODEL 123 PART NO.	MODEL 124 PART NO.	MODEL 125 PART NO.	DESCRIPTION
1	12302	12402	12502	Handle
2	12303	12403	12503	Drive Pin
3	12312	12412	12512	Wear Washer
4	12331	12431	12531	Adjusting Nut
5	12328	12428	12528	Shaft
6	12301	12401	12501	Body
7	12307	12407	12507	Spring
8	12306*	12406*	12506*	Collet
9	12315*	12415*	12515*	Tube Stop
10	12315*	12415*	12515*	Seal Stops
11	12308*	12408*	12508*	Seal
12	12317	12417	12517	Seal Stop Nut

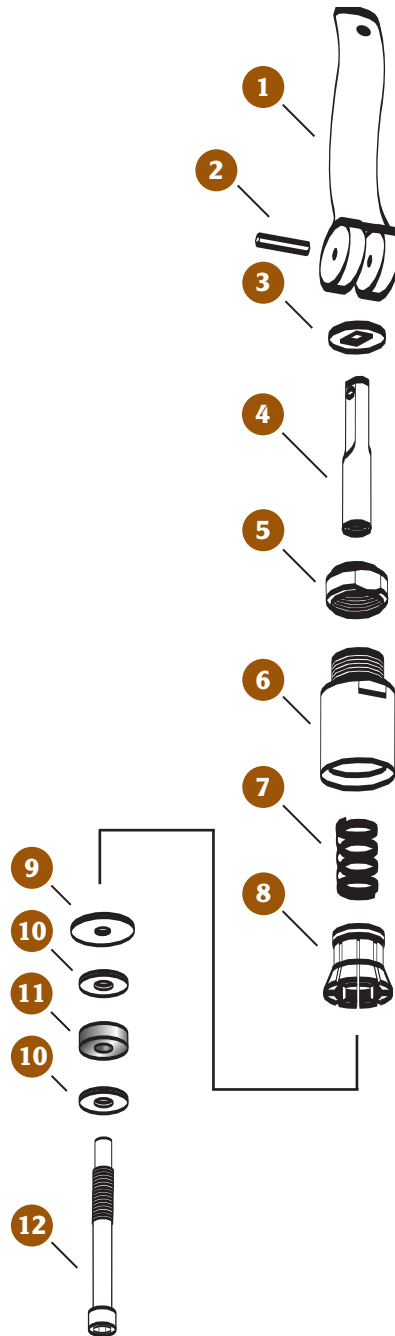


* Specify Model Number, and/or Tube I.D and O.D.

MODEL 131, 132

13 SERIES

ITEM NO.	MODEL 131 PART NO.	MODEL 132 PART NO.	DESCRIPTION
1	13102	13202	Handle
2	13103	13203	Drive Pin
3	13112	13212	Wear Washer
4	13128	13228	Shaft
5	13131	13231	Adjusting Nut
6	13122	13222	Collet Operator
7	13107	13207	Spring
8	13106*	13206*	Collet
9	13115*	13215*	Tube Stop
10	13115*	13215*	Seal Stops
11	13108*	13208*	Seal
12	13117	13217	Seal Screw

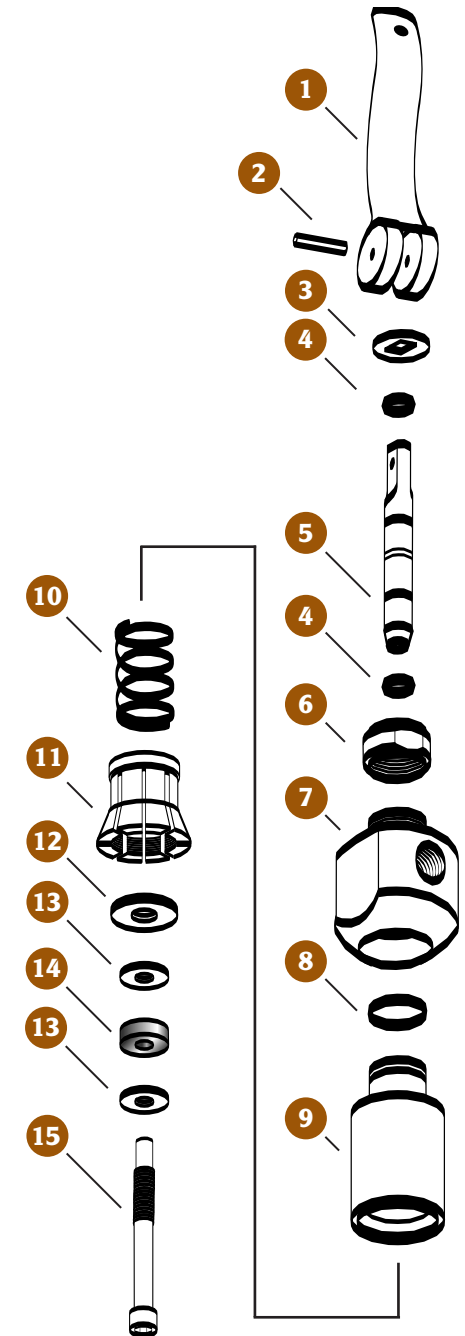


* Specify Model Number, and/or Tube I.D and O.D.
17

MODEL 141, 142

14 SERIES

ITEM NO.	MODEL 141 PART NO.	MODEL 142 PART NO.	DESCRIPTION
1	14102	14202	Handle
2	14103	14203	Drive Pin
3	14112	14212	Wear Washer
4	14124	14224	Quad Seal
5	14128	14228	Shaft
6	14131	14231	Adjusting Nut
7	14101	14201	Body
8	14123	14223	Quad Seal
9	14122	14222	Collet Operator
10	14107	14207	Spring
11	14106*	14206*	Collet
12	14115*	14215*	Tube Stop
13	14115*	14215*	Seal Stops
14	14108*	14208*	Seal
15	14117	14217	Seal Screw

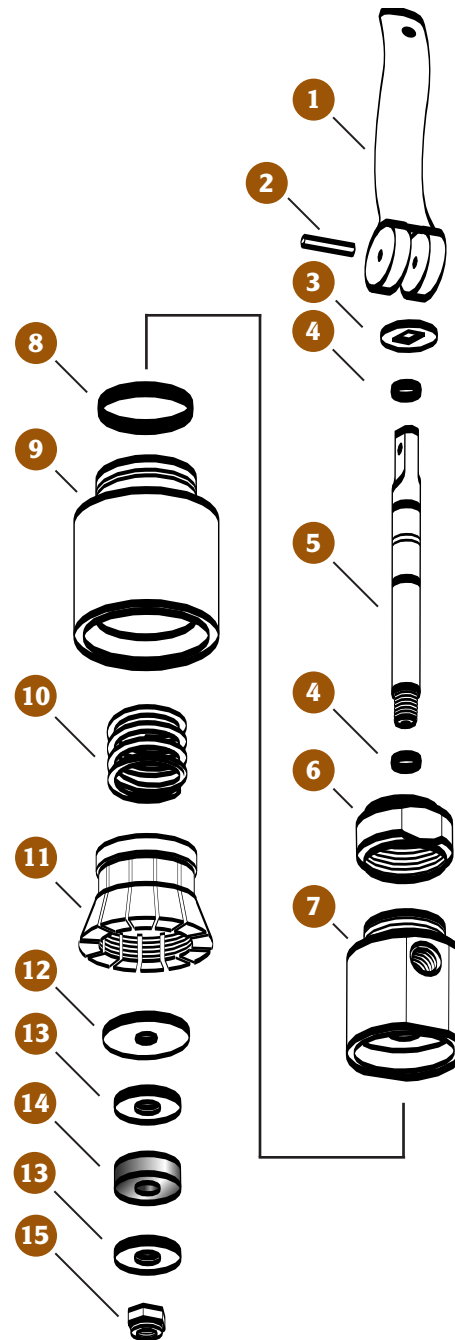


* Specify Model Number, and/or Tube I.D and O.D.

MODEL 143, 144, 145, 146

14 SERIES

ITEM NO.	MODEL 143 PART NO.	MODEL 144 PART NO.	MODEL 145 PART NO.	MODEL 146 PART NO.	DESCRIPTION
1	14302	14402	14502	14602	Handle
2	14303	14403	14503	14603	Drive Pin
3	14312	14412	14512	14612	Wear Washer
4	14324	14424	14524	14624	Quad Seal
5	14328	14428	14528	14628	Shaft
6	14331	14431	14531	14631	Adjusting Nut
7	14301	14401	14501	14601	Body
8	14323	14423	14523	14623	Quad Seal
9	14322	14422	14522	14622	Collet Operator
10	14307	14407	14507	14607	Spring
11	14306*	14406*	14506*	14606	Collet
12	14315*	14415*	14515*	NA	Tube Stop
13	14315*	14415*	14515*	14615*	Seal Stop
14	14308*	14408*	14508*	14608*	Seal
15	14317	14417	14517	14617	Seal Stop Nut

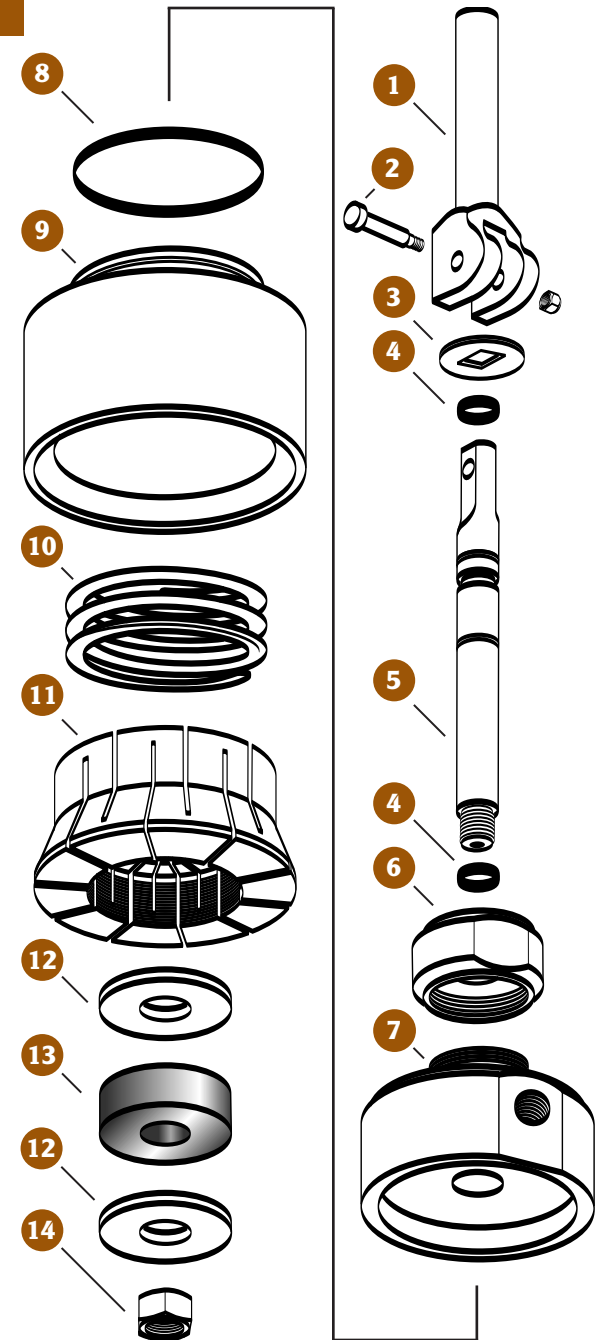


* Specify Model Number, and/or Tube I.D and O.D.

MODEL 147, 148, 149

14 SERIES

ITEM NO.	MODEL 147 PART NO.	MODEL 148 PART NO.	MODEL 149 PART NO.	DESCRIPTION
1	14702	14802	14902	Handle
2	14703	14803	14903	Handle Bolt w/Nut
3	14712	14812	14912	Wear Washer
4	14724	14824	14924	Quad Seal
5	14728	14828	14928	Shaft
6	14731	14831	14931	Adjusting Nut
7	14701	14801	14901	Body
8	14723	14823	14923	Quad Seal
9	14722	14822	14922	Collet Operator
10	14707	14807	14907	Spring
11	14706*	14806*	14906*	Collet
12	14715*	14815*	14915*	Seal Stop
13	14708*	14808*	14908*	Seal
14	14717	14817	14917	Seal Stop Nut

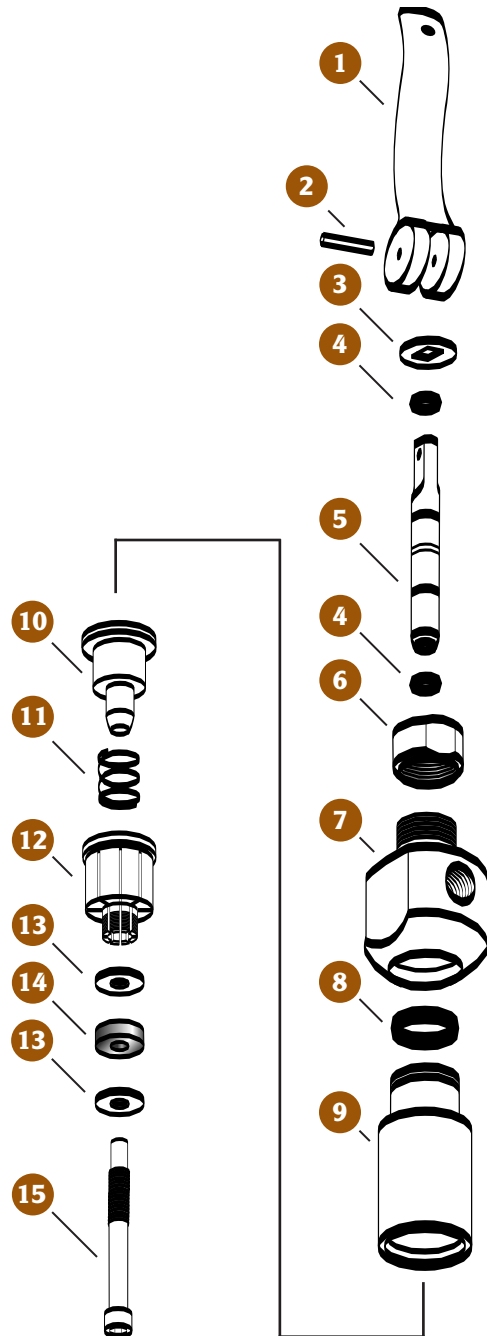


* Specify Model Number, and/or Tube I.D and O.D.

MODEL 201

20 SERIES

ITEM NO.	MODEL 201 PART NO.	DESCRIPTION
1	20102	Handle
2	20103	Drive Pin
3	20112	Wear Washer
4	20124	Quad Seal
5	20128	Shaft
6	20131	Adjusting Nut
7	20101	Body
8	20123	Quad Seal
9	20127	Guard
10	20122	Collet Operator
11	20107	Spring
12	20106*	Collet
13	20115*	Seal Stop
14	20108*	Seal
15	20117	Seal Screw

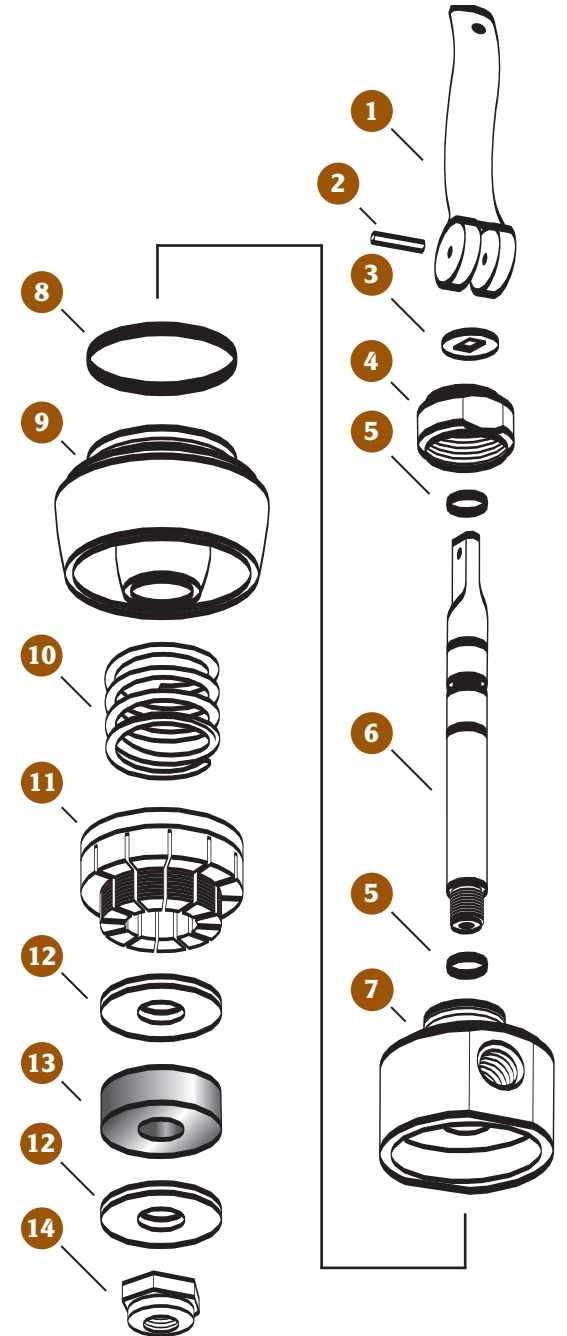


* Specify Model Number, and/or Tube I.D and O.D.

MODEL 202, 203, 204

20 SERIES

ITEM NO.	MODEL 202 PART NO.	MODEL 203 PART NO.	MODEL 204 PART NO.	DESCRIPTION
1	20202	20302	20402	Handle
2	20203	20303	20403	Drive Pin
3	20212	20312	20412	Wear Washer
4	20231	20331	20431	Adjusting Nut
5	20224	20324	20424	Quad Seal
6	20228	20328	20428	Shaft
7	20201	20301	20401	Body
8	20223	20323	20423	Quad Seal
9	20222	20322	20422	Collet Operator
10	20207	20307	20407	Spring
11	20206*	20306*	20406*	Collet
12	20215*	20315*	20415*	Seal Stop
13	20208*	20308*	20408*	Seal
14	20217	20317	20417	Seal Stop Nut



* Specify Model Number, and/or Tube I.D and O.D.